



It's Time You Experienced

ECLIPSE™

DISTECH
CONTROLS™

“A game-changer!” - *ThermAir Integrated Technologies*

“Something new in the industry!” - *EWA Controls*

“You just raised the bar...
in the whole industry.” - *Columbus Temperature Control*

“State of the Art!” - *Air-Traxx*

■ ■ ■ It's Time You Experienced

“It's cutting edge technology.” - *Energy Control Technologies*

“It elevates the systems beyond where
anybody is currently at.” - *Enertemp*



ECLYPSE™

ECLYPSE™ Connected IP and Wi-Fi Product Series, and ENVISION responsive, web-based design and visualization interface, provide powerful connectivity, and advanced control, monitoring and analysis, for your Internet of Things building.

The ECLYPSE controller series utilize BACnet/IP and IT standards, delivering empowered IP connectivity and open integration with building management systems. Choose wired IP, Wi-Fi, or combine both on a same controller to suit the building's infrastructure, architecture and layouts, minimizing impact on the building envelope while reducing installation costs.



■ ■ ■ Your Internet of Things Building

The Internet of Things (IoT) allows for the interchange of information and data on a common platform via IP-enabled objects and devices. Applied to building management systems, the Internet of Things enables integrated and optimized building services in one holistic system over IP.

Distech Controls prides itself in being your partner in delivering high value IoT buildings, by providing unique benefits through a truly open solution, convergence for reduced costs, enhanced user experience, and improved data exchange.



A Truly Open Solution

- Distech Controls' commitment to open standards, combined with the ECLYPSE connectivity platform, readies your building for the future and supports constantly evolving technologies
- Facilitate integration with other building management functions and devices over IP, an open protocol, such as fire alarm, elevators, digital signage, parking access, etc



Convergence for Reduced Costs

- Save installation time and costs by leveraging IT infrastructure, minimizing traditional installation and ownership costs of a building management system
- Eliminate the need to manage multiple networks, greatly reducing cabling and other materials, as well as the associated costs of installing, maintaining and upgrading them



Enhanced User Experience From Occupant, to Facility Manager and System Integrator

- Present information in a familiar graphical user interface – from native mobile apps, to responsive web-based interfaces
- Reduce volumes of data into user-relevant visual knowledge, graphs and reports
- Increase occupant satisfaction with additional control over their comfort settings
- Quickly detect issues and assess cost effectiveness to take proper actions and optimize resource efficiencies



Improved Data Exchange for Optimized Services

- Increased bandwidth and speed for large amounts of data, advanced analytics and increased trend logs
- Distribute relevant information to all users and deliver additional services, such as traffic reports, maps, commodity and energy prices, weather reports, and more
- Enterprise and third party connectivity: integrate data from other connected devices and business management systems
- Real-time data exchange over IP to take advantage of SmartGrid, demand response and other energy incentive programs
- Facilitate data exchange with our REST API and provide unique opportunities for value-added services, with the ever expanding range of available Internet of Things building management and tenant services applications



Unique Benefits for Your IoT Building

- Benefit from faster responsiveness when programming, configuring, creating and viewing graphics, and upgrading your system
- Advanced security and user authentication to protect critical data and your building management system
- Choose wired IP or Wi-Fi connectivity, tailoring your implementation to the available IT infrastructure and building layout
- Easily connect to your controller and system via an onsite or offsite IP connection using a PC or mobile device for commissioning, servicing and maintenance
- Reduce the need for onsite visits and the associated costs of time and travel, and improve your responsiveness to service calls



■ ■ ■ Distech Controls and You



Building Owner

- High ROI, IoT buildings with opportunities for value-added services
- Convergence for reduced costs: eliminate costs associated with maintaining and upgrading multiple networks
- Improved BMS performance, providing optimized energy efficiency and savings



Facility Manager

- Easily monitor and visualize your building's performance
- Respond to occupants' needs anywhere, and from any device



Occupant

- Highest levels of comfort
- Experience optimization



System Integrator

- Save installation time and costs by leveraging the IP infrastructure
- Easily perform onsite and offsite servicing



Consulting Specifying Engineer

- Deliver enhanced services, improved occupant comfort, optimized energy efficiency, reduced costs, and increased building owner ROI
- Convergence based on open, reliable standards
- An easy to use, time-saving specification builder



IT Professional

- Securely converge and manage the different networks and systems in your building

□□□□ Your Internet of Things Building

Visualization,
Enterprise Software
& Apps



ENVYSION



EC-Net^{AX} EnerVue



Mobile Apps - Native

Network Management,
Archiving, &
Global Functions



EC-Net^{AX} Supervisor



EC-Net^{AX} Security



Internet

Ethernet, TCP

Integration,
Multiprotocol / Multi-location
& Data Normalization

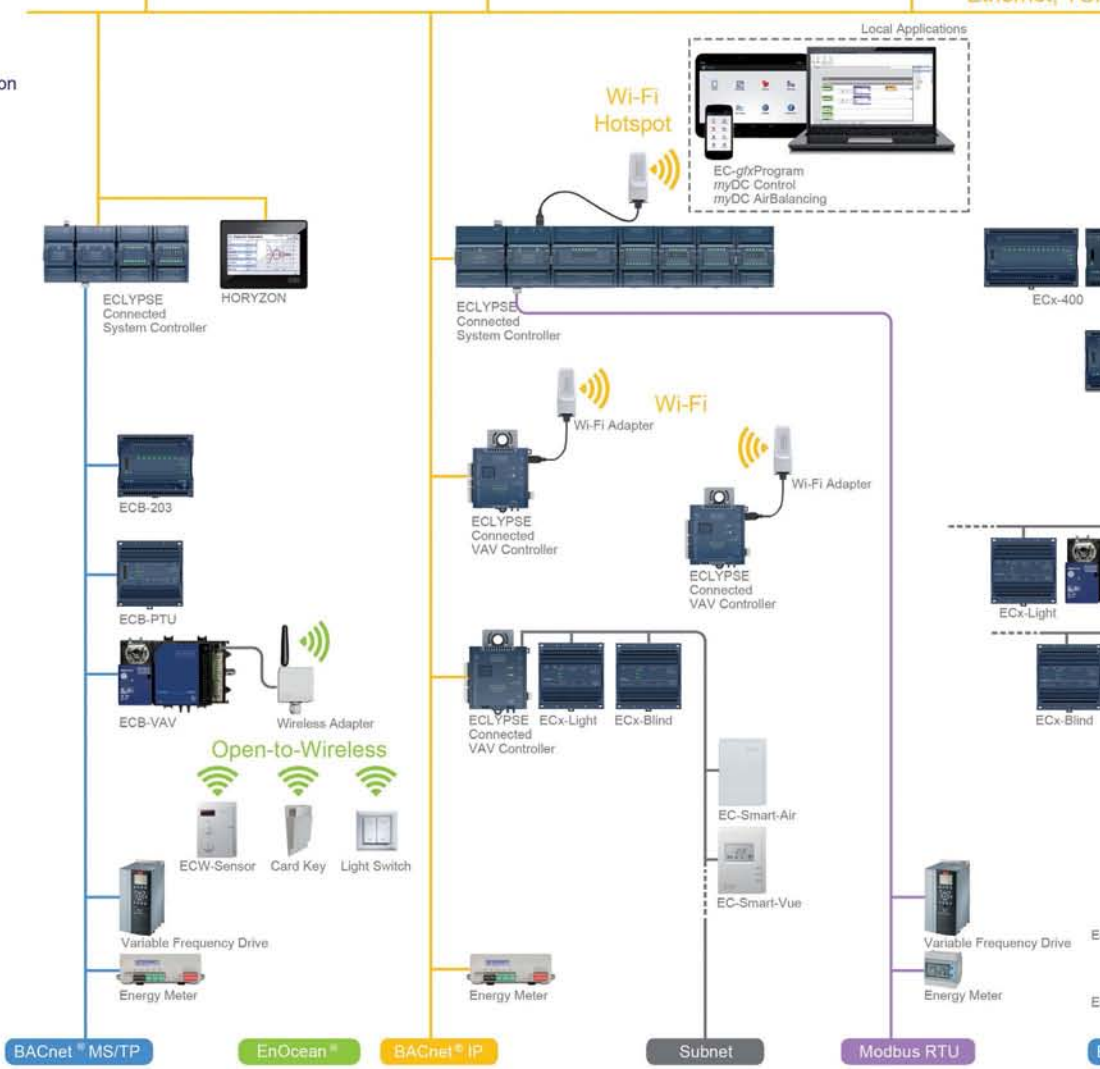
System & Equipment
- Controls & Display
- HVAC & Lighting

Room Controls
- HVAC & Lighting
- Sunblind / Shade

Room Devices

Field Devices

Room Devices and Field Devices

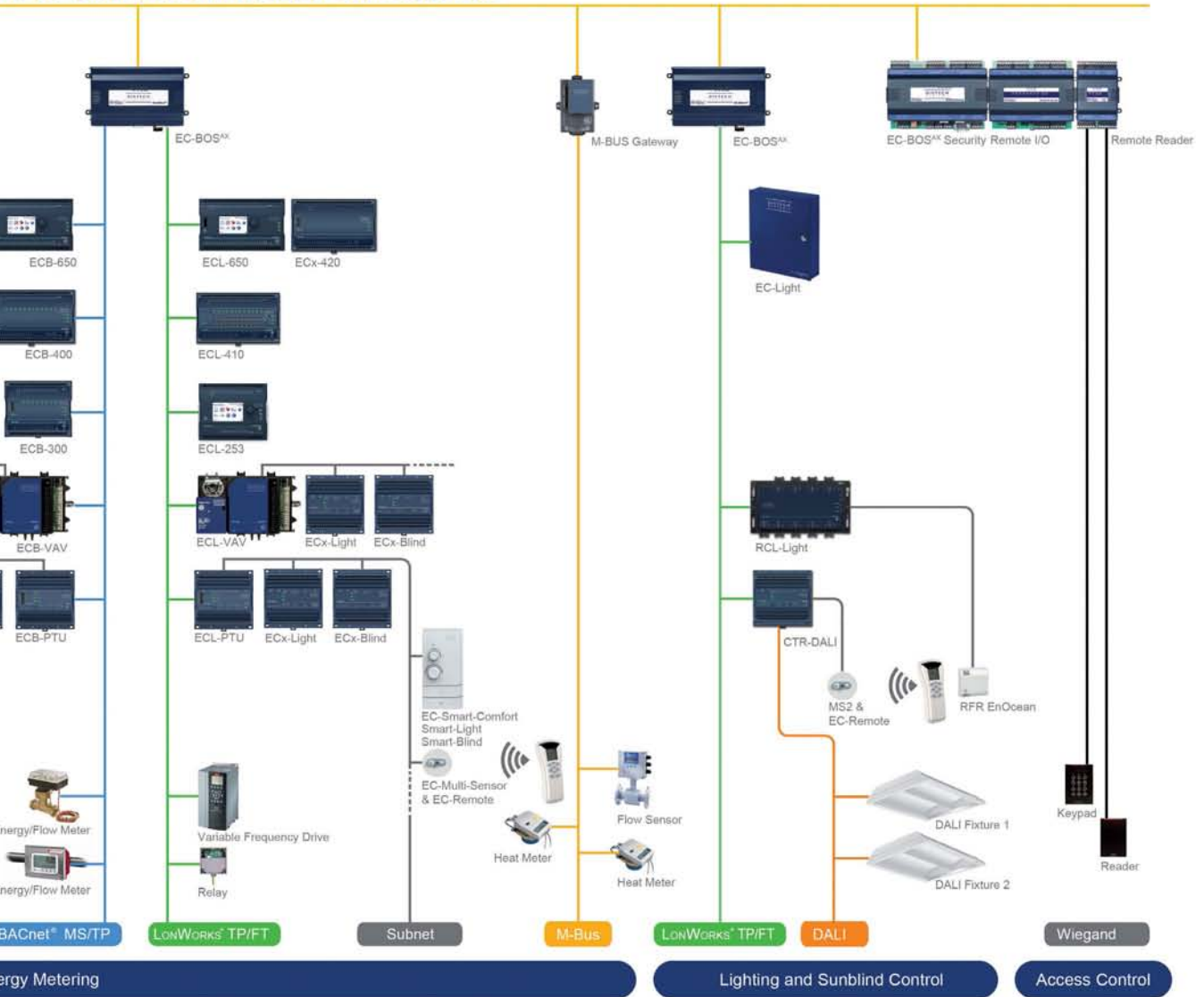


HVAC, Smart Room Control, Custom Applications and Energy



Distech Controls offers an extensive range of best-of-breed, performance-proven field devices that complement our building automation offering. This comprehensive line of field devices - including a variety of Distech Controls labelled products - offers a complete, cost effective solution, from design to installation.

P/IP, BACnet/IP, XML, HTTP, oBIX, FOX, Web Services



EnOcean® Wireless Communication

Infrared or Radio Communication

Wi-Fi Communication

* Availability subject to regional standards and regulations

■ ■ ■ ECLYPSE Connected System Controller

The ECLYPSE Connected System Controller is a modular and scalable platform, allowing you to cost effectively address any HVAC application. Consisting of a control, automation and connectivity server, power supply, and I/O modules, select the type and quantity of modules to meet your exacting

requirements, for up to 320 points. Available with embedded ENVYISION, providing a completely autonomous solution for dedicated equipment control or small building control applications, without the need for additional supervisory devices or software for visualization.

Daisy-chain up to 12 Allure™ Communicating Sensors



EC-Smart-Air



EC-Smart-Comfort



EC-Smart-Vue



Supports BACnet® MS/TP routing or Modbus RTU

Power Supply Modules

- 24 VAC/VDC or 100-240 VAC
- Latest high-efficiency switch mode circuitry- makes more power available!
- Over-voltage and over-current protection
- Low heat dispersion

Control, Automation and Connectivity Server

- Three models : 16, 48 or 320 points
- Proven high-performance and power efficient single-core processor speed for accelerated processing, reading and control and enhanced trending capabilities
- Local trending, alarming and scheduling functions
- Automated email notifications of system status and alarms for improved servicing and response time





Wi-Fi Adapter

Provides wireless connectivity including:

- Wi-Fi Client
- Wi-Fi Hotspot
- Wi-Fi Access Point
- Wi-Fi Mesh



Ethernet Communication - BACnet/IP, Modbus TCP

Input/Output Modules

- 7 I/O modules to choose from with optional HOA
- Auto-addressable modules
- Hinged gull wing design protects and covers the stacked dual row detachable I/O terminal strips
- Uniquely identified and color-coded terminal blocks
- Status LEDs



Learn more about the ECLYPSE Connected System Controller



■■■ ECLYPSE Connected VAV Controller

The ECLYPSE Connected VAV Controller series are designed to control any variable air volume box application "out-of-the-box" with

preloaded, configurable applications and embedded ENVYSION Viewer, for local hosting of application graphics.



Robust and Compact Design

- High performance, small footprint design
- Metallic pitot tubes and anchor points for improved sturdiness and lasting performance
- Color-coded, two-part rising-cage terminations facilitating wiring

ECY-VAV Preloaded App

- Select with EC-Smart-Vue communicating sensor or ENVYSION Viewer
- Choose from a variety of common VAV applications including single duct, series fan and parallel fan
- Includes support of ECM motor for parallel and series fan applications
- Integrated autodiagnosics and fault detection based on VAV Performance Assessment Control Chart
- Dynamic real-time application graphics generated from selection of preloaded application
- Pre-configured alarms, trend logs and fault detection (VPACC)

And With Power over Ethernet, Save More: ECY-VAV-PoE

The ECY-VAV-PoE uses standards-based IEEE Power over Ethernet implementation, employing a single network cable to provide both data and power, simplifying installation, maintenance and reducing related costs. This also eliminates the need for individual transformers for each controller.



Wi-Fi Adapter

Provides wireless connectivity including:

- Wi-Fi Client
- Wi-Fi Hotspot
- Wi-Fi Access Point
- Wi-Fi Mesh

Ethernet Communication - BACnet/IP

For All Your VAV Applications

- 4 universal inputs with high precision 16-bit AD
- 4 digital outputs (Triac)
- 2 universal outputs
- Built-in differential pressure transducer featuring polarity insensitive/polarity-free connection
- Integrated damper actuator with brushless DC motor
- Local trending, alarming and scheduling functions



Learn more about the ECLYPSE Connected VAV Controller!



Empowered Connectivity

Modern buildings are designed and built with structured IP networks supporting, for example, integrated telephone and data wiring. Building management systems can now leverage and converge with the IT infrastructure, to share a common IP network.

ECLYPSE empowered connectivity allows you to easily tailor implementation throughout the building to suit the available IT infrastructure, architecture and layouts, minimizing impact on the building envelope while reducing installation costs.

Hotspot

Create your own wireless area network, for wireless communication between controllers, or with a mobile device or laptop for configuration, commissioning and servicing.



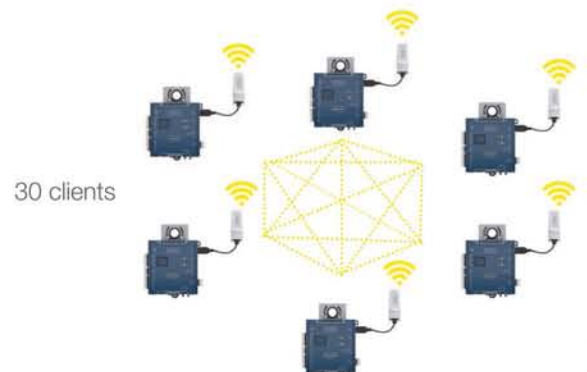
Access Point

Extend your building's IP network to your ECLYPSE controllers enabled with Wi-Fi.



Mesh

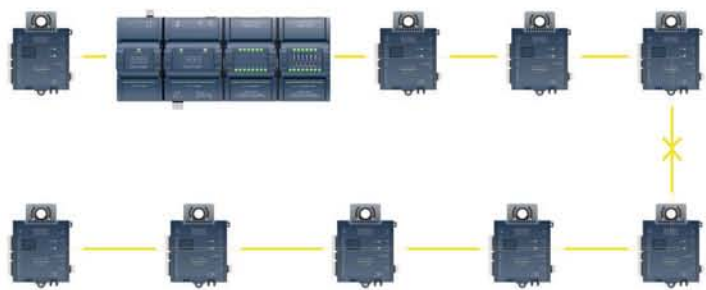
Allow multiple controllers to communicate with each other over a robust, self-healing network, with multiple communication paths. Wi-Fi Mesh also allows for a larger wireless coverage area.



Wired IP Daisy Chain

Up to 20 Connected System Controllers and 50 Connected VAV Controllers on one daisy chain. Improve the reliability and redundancy of your IP daisy-chain with:

- ❑ Connected VAV Controller: Integrated fail-safe: in case of power failure to one of the Connected VAV Controllers, communication data is still relayed to the following controller on the daisy-chain.
- ❑ Connected System Controller: Configure an STP loop-free topography implementation



Combine Both Wired IP and Wi-Fi



ENVYSION

ENVYSION, web-based graphic design and visualization interface, delivers the art and science of actionable visual knowledge and powerful user experience. ENVYSION is a "drag & drop" GUI

development platform providing a real-time, data-driven user interface and graphical elements that enhance communication and analysis.



- ✔ Reduce time and costs providing graphical elements that enhance communications and information including dashboards, charts, tables, reports, dynamic pages, and more
- ✔ HTML 5 platform, does not require any plug-ins or APIs for development or viewing
- ✔ Can be accessed onsite or remotely from any device, increasing responsiveness to occupants
- ✔ Dynamic and interactive content such as floor layouts with heat/cool mapping, graphics with playback feature, Google maps and more
- ✔ Fully responsive design for an optimal viewing experience across a wide range of devices
- ✔ For your IoT building: easily connect to web services such as maps, traffic information, weather reports and more

One Visualization Interface for All Platforms and Buildings

Choose from a variety of ENVYSION implementation options for a unique and differentiated user experience, whether on new or previously installed projects, and a consistent design across all platforms.



ENVYSION for EC-Net^{AX}:

- Expand the capabilities of an existing EC-Net^{AX} system, providing complete views of your BMS, with a custom-feel user interface that is natively responsive and does not require plug-ins or other add-ons



ENVYSION TechStudio

- Create or modify your ENVYSION projects anywhere and offline



Embedded ENVYSION in ECLYPSE Connected System Controllers (Studio & Viewer):

- For a completely autonomous solution in small buildings or for equipment control applications, without the need for additional supervisory devices or software for visualization



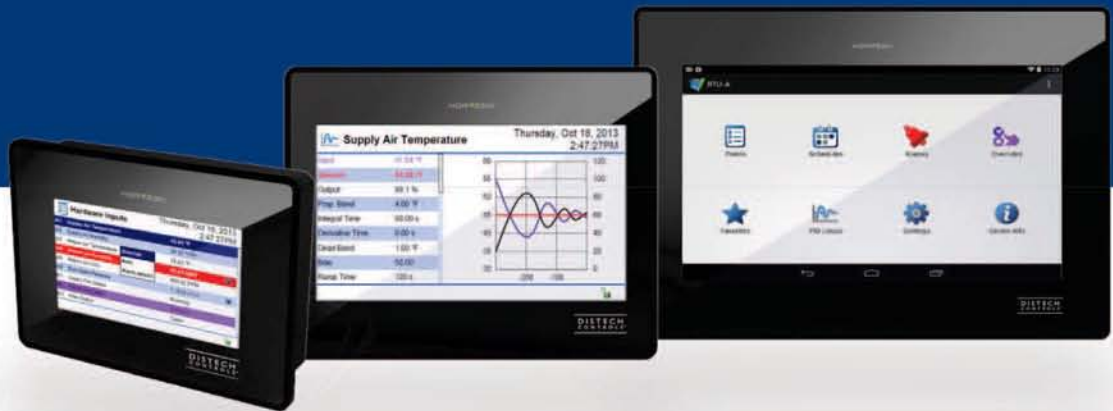
Embedded ENVYSION in ECLYPSE Connected VAV Controllers (Viewer):

- Host and view automatically generated graphics from the preloaded VAV applications

HORYZON

The HORYZON display, an IP-based, high resolution color LCD touchscreen developed for your ECLYPSE controllers or EC-Net^{AX} building management system. From mechanical rooms to small building applications,

the HORYZON display allows system integrators and facility managers to access, view, and engage with operating parameters of a system-for simplified commissioning, operations and troubleshooting.



HORYZON R4
4.3" resistive color
touchscreen display

HORYZON R7
7" resistive color
touchscreen display

HORYZON R10
10.1" resistive color
touchscreen display

Available panel or wall mounting

Automatic Interface Generation

- No interface configuration or development required
- Create a list of favorites to rapidly access commonly-used values
- Preloaded with a visual interface that connects directly to your ECLYPSE controller or EC-Net^{AX} building management system
- Color-coded icons provide at-a-glance indication of alarms and override conditions
- View, edit and override operating parameters of an HVAC system: input and output values, schedules, alarms, trend logs and PID loops
- Easily monitor values, equipment and system status, and view alarms so as to perform diagnostics and take corrective actions

Programming and Productivity Enhancing Tools

Distech Controls' industry leading programming and productivity tools facilitate device configuration, reduce programming time, and increase installation, troubleshooting, and commissioning efficiency by over 25%, while providing the flexibility to address the specific operational requirements of a facility.



EC-gfxProgram Graphical Programming Interface

- Provides an intuitive and customizable graphical programming environment
- Convert previously created control sequences for ECL LonWorks and ECB BACnet controllers

XpressNetwork Utility:

- Discover your ECLYPSE Connected VAV and Connected System Controllers. Perform batch operations to settings (wired IP, Wi-Fi, BACnet, RADIUS server, system settings) for one or more ECLYPSE controllers found on the available IP networks (wired and/or Wi- Fi)



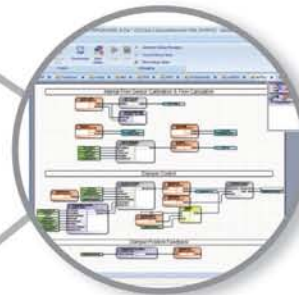
ENVYISIONwidgets and ENVYISIONimages

- Save time and costs when developing ENVYISION web-based design and visualization interface with pre-built, graphics-oriented blocs for real-time, dynamic views and functions.



Xpressgfx Points

- Build your custom programming sequence and points list and import into EC-gfxProgram. Provide an accurate points list and documentation in Excel



gfxApplications

- Utilize code libraries and pre-engineered blocs

Smart Room Control Solution With ECLYPSE

Distech Controls' Smart Room Control solution is a unified system for the control of HVAC terminal equipment, lighting, and shades/sunblind, achieving the highest levels of comfort for occupants while reducing operating costs, from installation time and

wiring/material requirements to energy consumption. It is a unique, modular solution designed for local or room applications, such as offices, open spaces, hospitals, dorms and military housing.



ECLYPSE Connected
VAV Controller

ECx-Light-4 Series
Lighting Control

ECx-Blind-4 Series
Sunblind Control

- Control up to 8 lights
- ON/OFF or dimming
- Models with integrated support of DALI

- Control up to 8 shades/sunblind
- Up/down and angle rotation

Over **30%** savings on HVAC

Up to **60%** savings on lighting

Personalized Comfort. Increased ROI.

A variety of room devices for occupants, including a convenient mobile app, have been designed to provide an easy-to-use interface to adjust personal comfort settings. These devices streamline the control of

temperature, lighting, and shades/sunblind, all while addressing the requirements of LEED® Credit 6.2: Controllability of Systems—Thermal Comfort.



Allure EC-Smart-Vue Communicating Sensor

- Four integrated sensors for temperature, humidity, CO₂, and motion.



Allure EC-Smart-Comfort Communicating Sensor

- All in one room device for temperature, fan speed, lighting and shade/sunblind



EC-Multi-Sensor

- Occupancy detection
- Light level sensing



Smart-Sense Mobile app



EC-Remote

- Wireless (infrared) personal remote control for light and shades/sunblind levels



Mobile Apps

Distech Controls has taken an innovative approach to designing user experiences: from delivering unique programming and productivity enhancing tools, to intuitive, engaging interfaces. Combining the mobile connectivity and familiar

interface of an app, these offerings increase productivity for system integrators and control technicians, provide value for building managers, and personalize comfort for occupants.



myDC Control

- Allow facility managers to quickly view, edit, and configure operating parameters of an HVAC system
- Color-coded icons provide at-a-glance indication of alarms and override conditions



myDC AirBalancing

- Provides convenient and secure access to only the VAV controllers of the building automation system (via EC Net^{AX}) to enable air balancing and perform auto-calibration



Smart-Sense

- Allows occupants to view or set comfort parameters at all times, from the convenience of a smartphone or tablet
- Intuitive interface for temperature, occupancy, fan speed, lighting and shade / sunblind remote control
- The innovative ECO-Vue™ feature graphically indicates energy consumption in real time, promoting energy-conscious behavior

“Wow!” - *Facio Corporation*

“Distech Controls has created
their own trend.” - *Controlworks PTY*

“Incredible!” - *Tekplan Solutions Florida*

Experience it at www.distech-controls.com/ECLYPSE

“Nobody has anything close to this.” - *Therma Corp*

“I think the future
looks very bright.” - *System One Control*



**DISTECH
CONTROLS™**

Innovative Solutions for Greener Buildings™

An innovation leader in energy management solutions, Distech Controls provides unique building management technologies and services that optimize energy efficiency and comfort in buildings, while reducing operating costs.

We deliver *Innovative Solutions for Greener Buildings™* through our passion for innovation, quality, customer satisfaction, and sustainability. The company serves multiple market segments through its worldwide business divisions, service offices and a superior network of Authorized Partners. Distech Controls, Inc. is a subsidiary of Acuity Brands Lighting, Inc.



Messung Systems Pvt. Ltd. (BACD)

402, The Chambers, Viman Nagar, Pune - 411014, India.

T: 020 - 6649 8600 | W: www.messungbacd.com

E: sales.distech@messung.com

Distech Controls, the Distech Controls logo, ECLYPSE, the ECLYPSE logo, and Innovative Solutions for Greener Buildings are trademarks of Distech Controls Inc. BACNet is a registered trademark of the American Society of Heating, Refrigerating and Air Conditioning Engineers. BTL is a registered trademark of BACNet International. All other trademarks are the property of their respective owners.

©, Distech Controls Inc., 2015. All rights reserved.

MDI-ECLYPSE-XX002