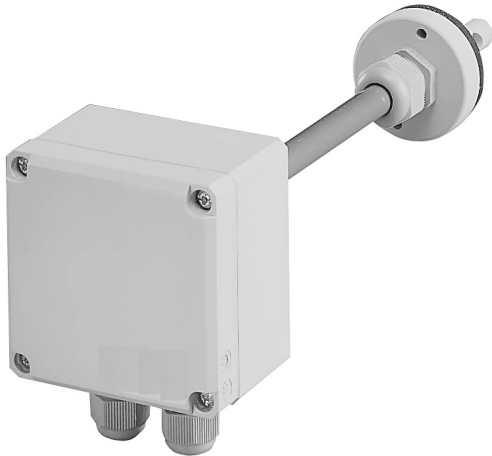




AV-SP3150MCS008

Airflow Transducer



Overview

The AV-SP3150MCS008 is an airflow transducer. These devices are used to measure the airflow speed in ducts. The AV-SP3150MCS008 transducer registers the airflow speed according to a thermal principle based on the fact that the cooling action of air increases with airspeed. The action is measured and converted to a 4-20 mA or 0-10 V signal corresponding to airflow speeds from 0-8 m/s (0-1575 ft/min) or 0-16 m/s (0-3150 ft/min).

Applications

- Used to measure, regulate and/or monitor airflow speed via PLC / outstation / EMS

Features & Benefits

- Converts airspeed into 4-20mA or 0-10Vdc output signal
- Linear output signal
- Made with corrosion resistant materials
- Fully electronic registration of airflow speed
- Fuse protected

Product Specifications

Environmental

Ambient Temperature	-20°C to 50°C (-4°F to 122°F)
Air Temperature	-10°C to 60°C (14°F to 140°F)
Storage Temperature	0°C to 50°C; 32°F to 122°F
Relative Humidity	0 to 95% Non-condensing

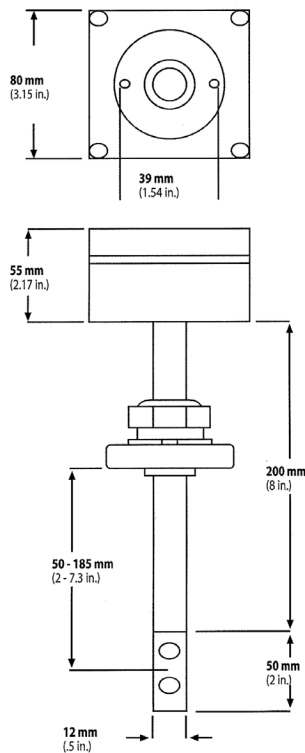
Enclosure

Material	ABS
Color	Beige/grey
Dimensions (Overall)	3.15" x 3.15" x 2.17" (80 mm x 80 mm x 55 mm)
Protection	IP54
Depth of Insertion	2" to 8" (50 to 200 mm)
Shipping Weight	0.75 lbs (0.341 kg)

Electrical

AC Voltage Supply	24 Vac (120 mA)
DC Voltage Supply	16-30 Vdc (80 mA)
Absolute Accuracy	±5%
Rise Time	20 seconds
Time Constant	5 seconds
Flow Output Signal	4-20 mA or 0-10 Vdc (jumper selectable)
Temperature output signal	0-10 Vdc
Temperature output range	0 °C to 50 °C; 32 °F to 122 °F
Airflow Speed (jumper)	0 to 16 m/s; 0 to 3150 ft/min; 0 to 8 m/s; 0 to 1575 ft/min

Dimensions



Specifications subject to change without notice.
Distech Controls, and the Distech Controls logo are trademarks of Distech Controls Inc. All other trademarks are property of their respective owner.
©, Distech Controls Inc., 2015. All rights reserved.