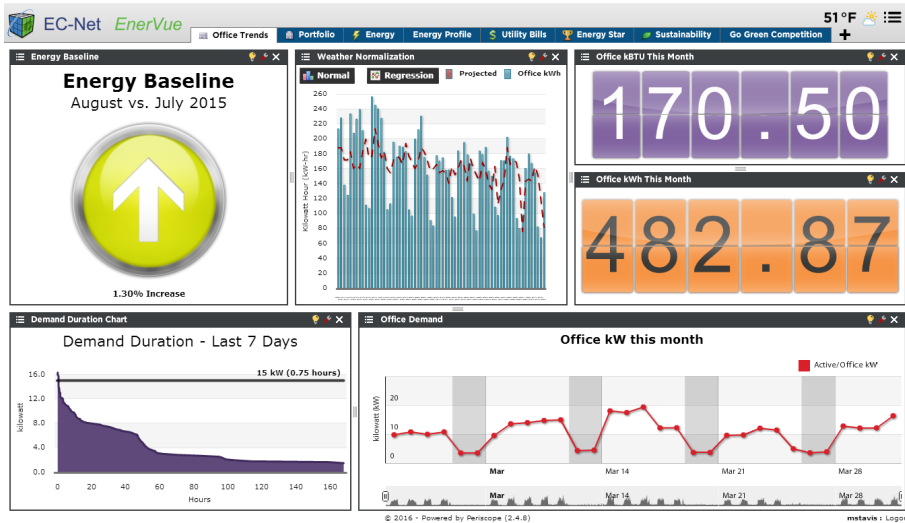




EC-Net *EnerVue*



Overview

EC-Net *EnerVue* is a configurable, graphical Web-based energy management dashboard application that provides rapid identification of real-time and historical trends in key areas of operations, including energy use, mechanical and electrical systems, operational efficiencies, and critical metrics. EC-Net *EnerVue* provides the opportunity for users to quickly identify issues, assess relationships, and take action in order to optimize resource efficiencies and sustainability by reducing volumes of data from disparate systems into visual knowledge.

Applications

- Equally useful for both new structures as well as retrofits.
- Offers real-time and historical data viewlets which allow for immediate identification of “energy anomalies” including after-hours runtime, set point overrides and adjustments via the automation system and demand side management opportunities.
- Intuitive tool that enables comparisons between buildings, campuses, and departments and allows assessments to be made in order to foster improved energy awareness.

- Enables clear visualization and documentation for building commissioning, as well as tools for validation of sustainable designs.
- Provides timely tracking of enhanced savings as a result of investments in conservation or capital projects.

Features & Benefits

EC-Net *EnerVue* Mobile

EC-Net *EnerVue* 2.4 now features mobile support for select viewlets. EC-Net *EnerVue* Servlets can be accessed on any mobile device that supports HTML5, which includes iOS and Android. The mobile UI displays a list of HTML5 compatible viewlets, which are displayed using HTML5. Viewlets can also be exported to HTML5 using the “Share Viewlet” feature, which allows embedding of viewlets into 3rd party web pages.



Customizable Dashboard

Due to the wide range of potential users, from the highly technical to the non-technical, EC-Net *EnerVue* was designed to provide each user with their own unique dashboard client. The dashboard can easily be set up and modified from a growing library of “viewlets” by any user without affecting any other users’ preferences and settings.

Stand-Alone Module

For single sites or smaller footprints, EC-Net *EnerVue* will run as a stand-alone module on an EC-BOS, eliminating the need for additional PCs based on Software as a Service (SaaS). EC-Net *EnerVue* allows owners to start small, yet remains scalable to fit any company’s growing needs.

Viewlet Library

A growing library of Viewlets empowers users to leverage their building data with a diverse library of visualization and analytic tools.

Auto Discovery Wizard

Allows users to efficiently identify and map the information from many sources, including meters, databases, or automation systems into multiple viewlets.

Data Normalization

Provides the ability to normalize data such as energy consumption, and account for differences in square footage, etc.

Optional Viewlets

EC-Net *EnerVue* offers an extensive library of optional viewlets that permit the analysis of various data, histories, and metrics, including energy trends, building comparisons, weather data, network status, consumption efficiencies, key performance indices, and more. EC-Net *EnerVue* can even display Web pages hosted by a third party, thus preserving prior investments while enabling side-by-side comparisons of operating graphics with related variables and performance trends.

Greentips Slideshow

Pictorial slideshow of viewlets showcasing energy-saving tips provides users with a highly informative and visually attractive display, perfect for kiosks.

The Kiosk Manager

Fully configurable with settings for viewlets, tabs, and informational popups. This helps foster “grass-roots” support, while highlighting the energy initiatives of corporate and public sustainability awareness campaigns.

Utility Bill Manager

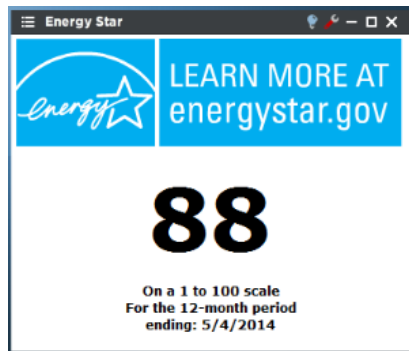
Provides an easy to use interface to manage utility bills. Bills can be added, edited and removed directly from the interface. This provides an easy way to incorporate utility bills into your dashboard.

Start Date	End Date	Cost (euro)	Consumption (kW-hr)	Demand (kW-hr)
1/1/14	1/31/14	0	0	0

ENERGY STAR® Support

EC-Net *EnerVue* can now integrate directly with EPA's ENERGY STAR Portfolio Manager. The driver can pull utility bill data and metrics from the ENERGY STAR database into EC-Net and can also push meter data directly into properties created in EPA's ENERGY STAR Portfolio Manager. This automated process can save an Energy Manager a significant amount of time.

ENERGY STAR data and scores can also be displayed directly in EC-Net *EnerVue* and locations can be ranked based off of their score.



User-Centric

Each user can create, view and modify their own *EnerVue* Servlet “on-the-fly” in minutes, thus enabling them to focus on current or rapidly changing conditions for their area of responsibility.

Virtual Naming

Data mapped into EC-Net *EnerVue* can be given “friendly” (recognizable) names without impacting the underlying control and meter database.

Ownership

Avoid cloud-based dashboard applications by hosting your dashboard on your server and network, behind your firewall. Say goodbye to hosting fees and concerns over data ownership.

Equivalency Conversions

Allows for “one-click” display of selected trends in equivalent units, such as kWh to dollars or metric tons of CO₂.

Viewlet Export Options

Viewlets can be exported as an image file, or as an image within a PDF file. Their tabular data can also be exported in CSV format for instant use in reports and technical documents.

Competition

Users can benchmark locations against one another. Engage your tenants, employees, students, etc. to actively participate in lowering their energy usage in a fun and competitive way. Use EC-Net *EnerVue* to give real-time feedback on the results of the competition period.

Localization for Language and Currency

Dashboards can operate in multiple languages, even within the same installation, enabling multilingual, user-specific implementations.

Facility & Business Data

Provides integrated views of facility contribution to business profitability, such as energy cost per production unit.

EC-Net *EnerVue* Guest Accounts

Guest accounts permit administrators to build views for a target audience, but prevent the guest users from accidentally modifying the intended setup. This feature helps protect important configurations while “publishing” information to a large audience.

EC-Net

Uses existing EC-Net user rights to enable maximum management flexibility.

Web-Based

Built with an open source framework for building and maintaining expressive web applications that deploy consistently on all major browsers, desktops, and operating systems.

Model Selection

Applications

Product Name	Description
<i>EnerVue</i> for EC-Net 4/AX Supervisor	<i>EnerVue</i> for EC-Net 4/AX Supervisor, w/Std Viewlet Package: Resource Consumption; Circular & Semi-Circular Gauge; Point Table; History Line, Pie & Column Chart; PX & Web Page; Virtual Utility Meters; Green Tips Slide Show; Digital Totalizer. Includes 10 locations.
<i>EnerVue</i> for EC-Net 4/AX Supervisor (OFL)	<i>EnerVue</i> for EC-Net 4/AX Supervisor Offline, w/ Std Viewlet Package: Resource Consumption; Circular & Semi-Circular Gauge; Point Table; History Line, Pie & Column Chart; PX & Web Page; Virtual Utility Meters; Green Tips Slide Show; Digital Totalizer. Includes 10 locations.
<i>EnerVue</i> Online to Offline (Supervisor)	Converts <i>EnerVue</i> for EC-Net 4/AX Supervisor online license to offline version.
<i>EnerVue</i> for EC-BOS	<i>EnerVue</i> for EC-BOS, w/Std Viewlet Package: Resource Consumption; Circular & Semi-Circular Gauge; Point Table; History Line, Pie & Column Chart; PX & Web Page; Virtual Utility Meters; Green Tips Slide Show; Digital Totalizer. Includes 10 locations.
<i>EnerVue</i> for EC-BOS (Offline)	<i>EnerVue</i> for EC-BOS Offline, w/Std Viewlet Package: Resource Consumption; Circular & Semi-Circular Gauge; Point Table; History Line, Pie & Column Chart; PX & Web Page; Virtual Utility Meters; Green Tips Slide Show; Digital Totalizer. Includes 10 locations.

Location Adder

Product Name	Description
Location Adder (10)	Adds block of 10 locations.
Location Adder (25)	Adds block of 25 locations.
Location Adder (50)	Adds block of 50 locations.
Location Adder (100)	Adds block of 100 locations.
Location Adder (250)	Adds block of 250 locations.
Location Adder (500)	Adds block of 500 locations.

Optional Viewlets

Product Name	Description
Optional <i>EnerVue</i> V101	Ranking Comparison History
Optional <i>EnerVue</i> V102	Utility Performance Index History
Optional <i>EnerVue</i> V103	Demand Duration History
Optional <i>EnerVue</i> V104	Network Health (Spider Chart) Diagnostic
Optional <i>EnerVue</i> V105	Utility Accounting History
Optional <i>EnerVue</i> V106	Columnar Drill Down Point
Optional <i>EnerVue</i> V107	Pie Chart Drill Down Point
Optional <i>EnerVue</i> V108	Baseline Comparison History

Product Name	Description
Optional <i>EnerVue</i> V109	Point Line Chart (Live) Point
Optional <i>EnerVue</i> V110	Dual Axis History
Optional <i>EnerVue</i> V111	History ColorGrid History
Optional <i>EnerVue</i> V113	Year-Over-Year History
Optional <i>EnerVue</i> V114	Event History Timeline History
Optional <i>EnerVue</i> V115	High-Low-Average History ¹
Optional <i>EnerVue</i> V116	Area Chart History ¹
Optional <i>EnerVue</i> V117	Critical Alarm Diagnostic ¹
Optional <i>EnerVue</i> V901	Optional Viewlet Bundle: Includes all Optional <i>EnerVue</i> V1XX Series Viewlets. ²
Optional <i>EnerVue</i> V201	AHU Diagnostics Package: Space Temperature Compliance; AHU Setpoint Efficiency Ranking; Cooling vs. Supply Air Temperature; Heating vs. Supply Air Temperature.
Optional <i>EnerVue</i> V251	Weather Normalization Diagnostic. Location Based Degree-Day Normalization Analysis.
Optional <i>EnerVue</i> V271	Cross Correlation Analysis Diagnostic. Determines the correlation between any two variables over a common timeframe.
Optional <i>EnerVue</i> V275	Energy Profile Diagnostic. Compares time period performance against similar time periods, i.e. weekday vs avg weekday, summer versus winter, etc.
Optional <i>EnerVue</i> V276	Utility Bill Manager Diagnostic. Manages Utility Bill Data Input. Includes SDIAL-ENE-U001 and SDIAL-ENE-V105 Utility Acct Viewlet + HTML5 User Input Screens for bills.
Optional <i>EnerVue</i> V301	Solar Energy Generation Focus Viewlet.
Optional <i>EnerVue</i> V302	Wind Energy Generation Focus Viewlet ¹
Optional <i>EnerVue</i> V311	Electric Vehicle Charging Station Information Viewlet ¹
Optional <i>EnerVue</i> V339	ENERGY STAR Bundle. Includes ENERGY STAR Portfolio Manager Driver, Ten (10) Properties, ENERGY STAR Viewlet, and ability to rank ENERGY STAR Scores in Ranking Chart Viewlet (if purchased). ³
Optional <i>EnerVue</i> V401	FIN: Connect Viewlet: Enables the native integration and manipulation of pre-existing FIN ⁴ Files in the system. ¹
Optional <i>EnerVue</i> V402	Media: Connect Viewlet: Viewlet Flash player for <i>EnerVue</i> sourced Flash library. ¹

ENERGY STAR Adder

Product Name	Description
ENERGY STAR Property Adder (10)	Adds block of 10 ENERGY STAR Properties
ENERGY STAR Property Adder (25)	Adds block of 25 ENERGY STAR Properties
ENERGY STAR Property Adder (50)	Adds block of 50 ENERGY STAR Properties
ENERGY STAR Property Adder (100)	Adds block of 100 ENERGY STAR Properties
ENERGY STAR Property Adder (250)	Adds block of 250 ENERGY STAR Properties
ENERGY STAR Property Adder (500)	Adds block of 500 ENERGY STAR Properties

Other Tools

Product Name	Description
Viewlet Web Publisher	Enables the User to publish individual Viewlets to external web pages
Virtual History Package	Enables auto generation of virtual histories for unit conversion and History Grouping Functions ¹
<i>EnerVue</i> Mobile	Allows certain viewlets to be mobile accessible. Refer to <i>EnerVue</i> user guide for specific viewlets that are mobile accessible.
Utility Data Import	CSV Mapper Utility to map data for Utility Accounting Viewlet

Upgrade & Maintenance

Product Name	Description
Annual Upgrade Agreement	Upgrades JAR file and owned viewlets (multi-instances/yr)
Host ID Change Request	For moving existing license to new Host ID

Notes:

1. This viewlet is only available with *EnerVue* version 2.2 or greater.
2. Applies to optional viewlets at time of original purchase.
3. This viewlet is only available with *EnerVue* version 2.4 or greater.
4. Requires 3rd party license for FIN Builder.

Specifications subject to change without notice.

Distech Controls, the Distech Controls logo, Innovative Solutions for Greener Buildings, EC-Net, ECO-Vue, Allure, and Open-To-Wireless are trademarks of Distech Controls Inc.; LonWorks, LON, and LNS are registered trademarks of Echelon Corporation; BACnet is a registered trademark of ASHRAE; BTL is a registered trademark of the BACnet Manufacturers Association; Niagara^{AX} Framework is a registered trademark of Tridium, Inc.; EnOcean is a registered trademark of EnOcean GmbH. All other trademarks are property of their respective owners.

©, Distech Controls Inc., . All rights reserved.

